



Nutmeg Farm, 60 South Rd, Portland, CT 06480

**Two Sanctioned Barn Hunt Trials**  
**Sunday, January 25, 2015**  
**Trial Starts at 10am**

Judge Jessica Edgerly, Columbia, CT  
Judge Carol Soeldner, Dedham, MA

Trial opens Thursday, January 1, 2015  
Entries close: Sunday, January 18, 2015

**\*\*ONLINE ENTRIES ONLY\*\***

Enter online at [www.nutmegfarm.net](http://www.nutmegfarm.net)

Trial 1: Instinct, Novice, Open, Senior, Masters  
Trial 2: Novice, Open, Senior, Masters

Entry fees for Instinct \$17.50  
All other classes \$25.50  
(includes BHA recording fee)



Permission has been granted by the Barn Hunt Association, LLC for the holding of these barn hunt trials under BHA rules and regulations.

Trial Committee: Lynnette Milleville, Matthew Milleville, Julie Soucy  
Trial Secretary: Matthew Milleville  
Email: [trials@nutmegfarm.net](mailto:trials@nutmegfarm.net)  
Phone: (860) 342-4279  
[www.nutmegfarm.net](http://www.nutmegfarm.net)

**Exhibitor Information**

The trial grounds are on a working farm. Please respect our farm and livestock. Do not enter restricted areas and do not allow your dogs near the livestock. Injured livestock expenses including veterinary and disposal costs are the responsibility of the owner/handler. Livestock replacement is valued at current market value.

All dogs must be on a leash and under control while on trial grounds. **No flexi-leads are permitted on trial grounds.**

Due to the proximity of our neighbors please quiet barking dogs when not working. **Please control excessive barking.**

There is **no smoking** on the grounds.

Please **pick up after your dog** and dispose of their waste in the appropriate trash cans provided throughout the grounds.

Food and beverages will be available on the trial grounds.

**Motels**

Super 8 Motel	(860) 372-4636	1499 Silas Deane Hwy, Rocky Hill, CT
Super 8 Motel	(860) 632-8888	1 Industrial Park Rd, Cromwell, CT

When booking your room be sure to check that the hotel still accepts dogs. Please pick up after your dog at your hotel.

**Vaccinations**

All dogs should be current with all vaccinations.  
Proof of current rabies vaccination must be provided upon request.  
Sick dogs will be asked to leave the trial grounds for the safety of all competitors.

**Veterinary Clinic**

Pieper Memorial Veterinary Center, 730 Randolph Rd, Middletown, CT  
(860) 347-8387

### Classes Offered

Trial 1: Instinct, Novice, Open, Senior, Masters

Trial 2: Novice, Open, Senior, Masters

### Awards

Class ribbons will be given for 1st-4th place. Qualifying ribbons will also be awarded. High Score Novice, Open, Senior, Master, and Combined awards will be awarded.

### Bitches in Season

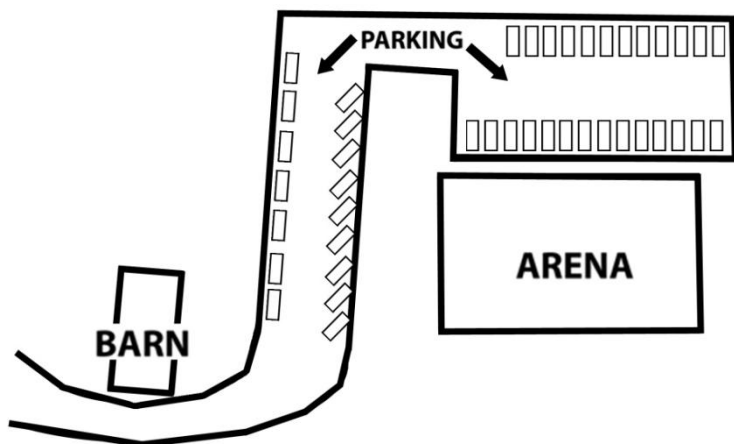
Bitches in season may compete at this trial and will be run at the end of their class. If bringing a bitch in season, please inform the trial committee prior to the trial and inform all exhibitors at the judge's briefing. Bitches in season will be required to compete in pants.

### Weather

This trial will be held rain, snow, or shine. Please bring weather appropriate gear. If it has rained or snowed recently the grounds can be muddy or icy. If the weather is hot, there is a pond on the grounds for dogs to swim in. Exhibitors are responsible for water and shade for their dogs.

### Parking

Parking is limited so we will need to have cars parked as close together as possible down by the arena. Above the arena cars will need to parallel park on the side close to the barn and diagonally on the side toward the arena.



Please park as shown on this map.

Trial opens January 1st. Entries will be accepted in the order they are received until the limits are reached or until January 18th at 8:00 PM.

\*\*\*\*\* **WE ARE ONLY ACCEPTING ONLINE ENTRIES.** \*\*\*\*\*  
**ENTRIES MUST BE SUBMITTED ONLINE VIA OUR WEBSITE:**  
[www.nutmegfarm.net](http://www.nutmegfarm.net)

Entry fee must accompany all entries to be valid. **You may pay online using a credit card.** Directions to do so will be provided during the online entry process. If you prefer to pay by check please make it out to Nutmeg Farm and mail to Nutmeg Farm, 60 South Rd, Portland, CT 06480. Be sure to include your dog(s) official Barn Hunt number(s) with your check. There will be a \$50 charge for all returned checks. **\*\*No refunds will be granted after closing date.\*\***

Entry fees will not be refunded in the event that a dog is absent, disqualified, excused, or barred from competition by the action of the trial committee. No entry fee will be refunded if the trial cannot open or be completed by reason of riots, civil disturbances, fire, acts of God, weather, public emergency, act of public enemy, or any other cause beyond the control of the trial committee. Once the trial closes entry fees are not refundable.

All dogs must be registered with the Barn Hunt Association and have a Barn Hunt number to enter and participate in the trial. Dogs may enter both Instinct and Novice classes at the same time until a RATN title is earned. **Move ups are welcomed.**

It is the owner/handler's responsibility to know the BHA Rules and Regulations, which can be found at [www.barnhunt.com](http://www.barnhunt.com). Therefore it is recommended that the BHA Rules and Regulations are read before attending the trial.

Exhibitors are responsible for being at the staging area ready to enter the Blind when it is their turn. The judge need not wait for any dog holding up a class. The club has no obligation or responsibility for providing this service through a public address system or steward for the purpose of calling or locating dogs that are not brought to the ring when required.



**NUTMEG FARM**

60 South Road  
Portland, CT 06480  
nutmegfarm.net

## **DIRECTIONS**

### **From Hartford**

Rt 84 East exit 55 to Rt 2 East

Rt 2 to Rt 17 South (Glastonbury-Portland)

Left at Isinglass Hill Road for .7 miles.

Turn right on to Thompson Hill Road for 1.4 miles.

Turn left at Old Marlborough Turnpike .4 miles.

Turn right on South Road for .6 miles.

Farm on Right.

### **From South (Middletown) RT 17/Rt 66**

Follow over Connecticut River into Portland.

Turn right on to Rt 66 (East) follow for 2 miles.

Turn left onto Rt 17 (North) follow for 2 miles

Turn right on to Sage Hollow Road for .3 miles.

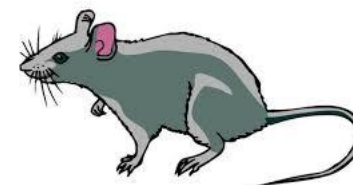
Take slight right on to Rose Hill road for .2 miles

Turn left on to Cox Road 1.2 miles

Turn left on to South Road .3 miles

Farm on left.

# **Happy Hunting!**



# **Rat On!**